

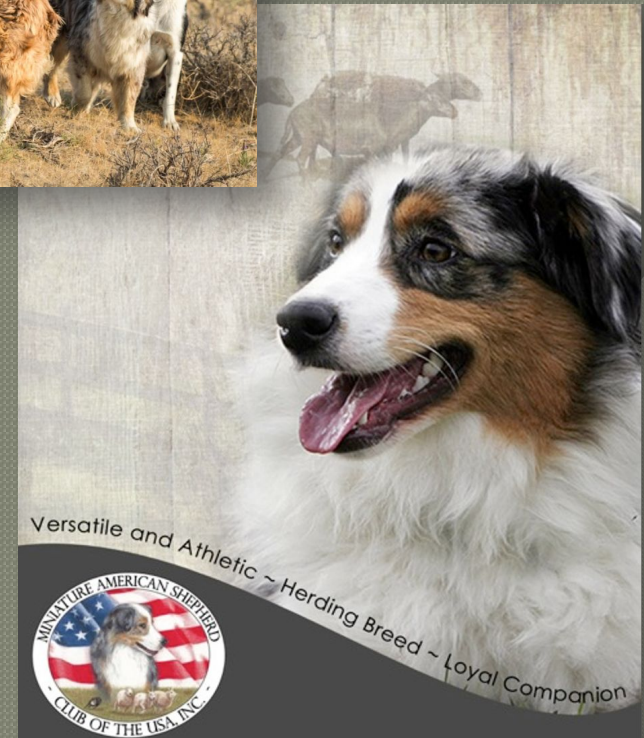
BREED COMPARISON



Kimber Wallwork-Heineman

Australian Shepherd

Miniature American Shepherd



Parent Club Note

Thank you for attending this Breed Comparison session.

If you have not done so, we strongly encourage you to attend each Parent Club's Breed Education Seminar.

This overview is not a slide-by-slide comparison of the individual breed education seminars, nor is it intended to be a comprehensive study of each breed and its AKC Breed Standard.

Instead, our goal with this session is to share a high-level overview of the critical similarities and differences in our Breed Standards. Thank you!

Shared Origin (U.S.A) Shared Purpose



Breed Standard - Similarities

- Proportions
- Substance
- Expression
- Eyes
- Ears
- Skull
- Muzzle
- Neck
- Topline
- Tail
- Forequarters
- Hindquarters
- Coat
- Color
- Gait
- Temperament

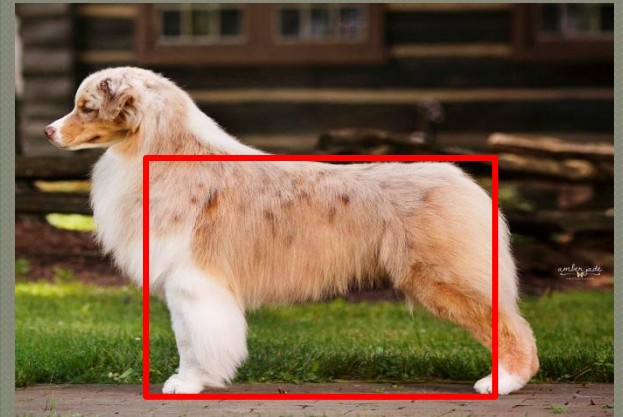
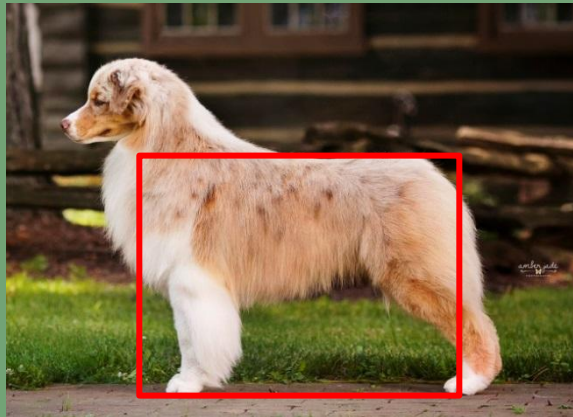
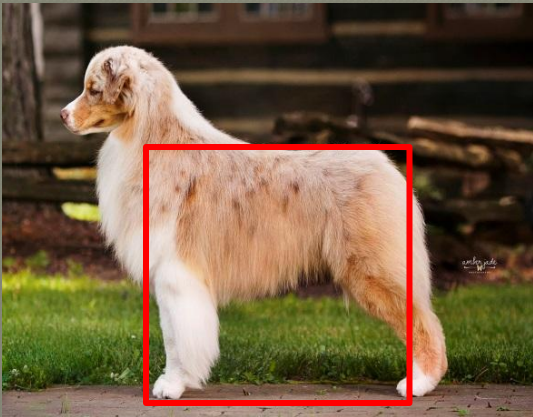
General Appearance

- Well balanced
- Slightly longer than tall
- Medium (moderate) size and bone
- Lithe and agile
- Coat of moderate length and coarseness
- Solidly built
- Colors offer variety/individuality
- Traditional docked or natural bobbed tail



Proportion

Slightly Longer than Tall—measuring from the breastbone to the rear of the thigh and the top of withers to the ground



Substance

Australian Shepherd – Male & Female

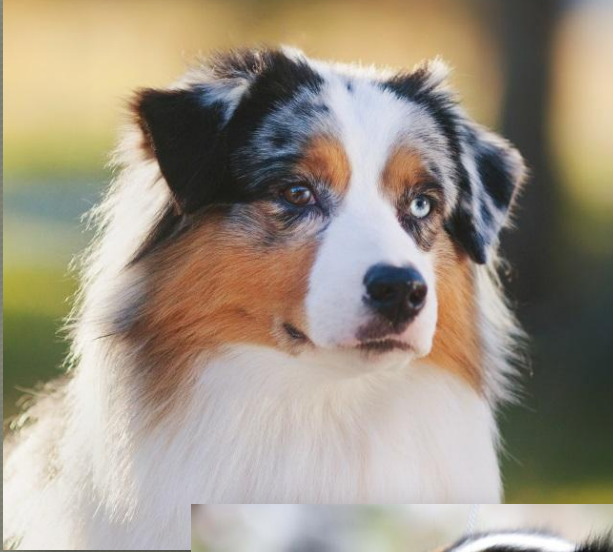


- Solidly built with moderate bone
- Males — Masculinity without coarseness
- Bitches — Feminine without slight of bone

Miniature American Shepherd – Male & Female



Australian Shepherd – Male & Female



Head

Miniature American Shepherd – Male & Female



- Clean cut, strong and dry
- Overall size in proportion to the body

Eyes

- Brown, blue, amber or **ANY** variation or combination including flecks and marbling (one or both eyes)
- Almond shaped, not protruding nor sunken
- Blue merles and blacks have black pigmentation on eye rims
- Red merles and reds have liver (brown) pigmentation on eye rims



Gait from the Side

- Smooth, free, and easy; exhibiting agility of movement with a well-balanced, ground-covering stride
- Agile and able to change direction or alter gait instantly
- Well balanced gait
- Back remains firm and level



Gait – Coming & Going

- Fore and hind legs move straight and parallel with the center line of gravity
- As speed increases, the feet (front and rear) converge toward the center line of gravity
- Back remains firm and level



Ears

- Triangular
- Moderate size and leather
- Set high on head
- At full attention ears break forward and over, or to the side as a rose ear



Severe Faults: Prick ear and hanging ear. >

Skull & Muzzle

- Skull: top flat to slightly domed. It may show a slight occipital protuberance. Length and width are equal.
- Stop: moderate, well defined
- Muzzle: Equal in length or slightly shorter than the back skull. Tapers little from the nose and is rounded at the tip.



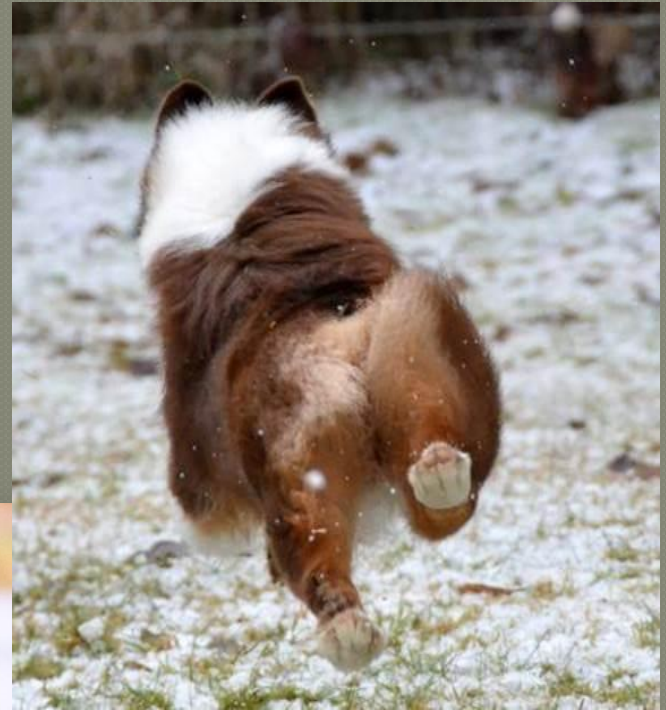
Tail

Australian Shepherd:

- Docked or naturally bobbed. Not to exceed 4" in length

Miniature American Shepherd:

- Docked or natural bobtail preferred. A docked tail is straight, not to exceed 3".



Color

- Blue Merle, Black, Red Merle, Red: with or without white or tan (copper) markings, with no order of preference
- This allows for 16 color combinations



Coat

- Hair medium texture and length, straight to wavy and weather resistant
- The undercoat varies in quantity with variations in climate
- Short and smooth on head, ears, front of forelegs and below the hocks
- Moderately feathered backs of forelegs and britches
- Moderate mane and frill; more pronounced in males



White Body Splash - Disqualifying Fault



- White body splashes, which means any conspicuous, isolated spot or patch of white on the area between the withers and tail, on back, or sides between elbows and back of hindquarters.

Breed Standard - Differences

- Height
- Teeth
- Faulted White
- Pink on Nose
- Head Planes

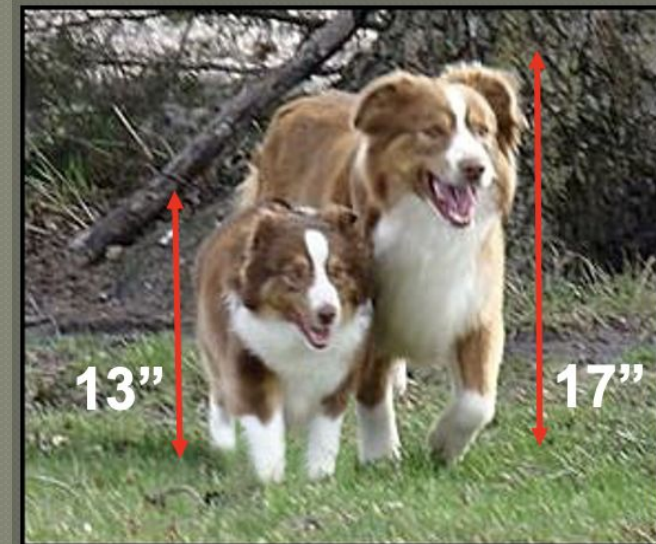
Height...the biggest (or smallest) differentiator

Australian Shepherds

- Bitches: Preferred 18" - 21"
- Dogs: Preferred 20" - 23"
- Quality not to be sacrificed in favor of size.

Miniature American Shepherds

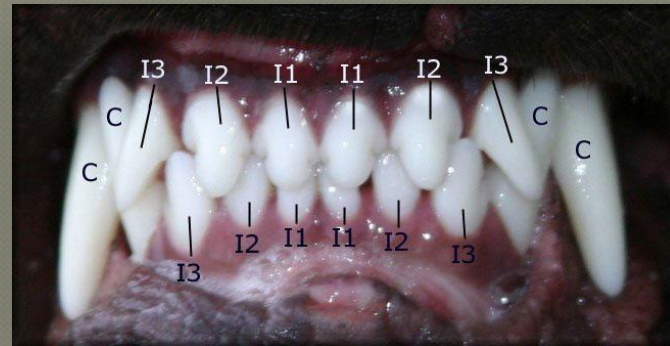
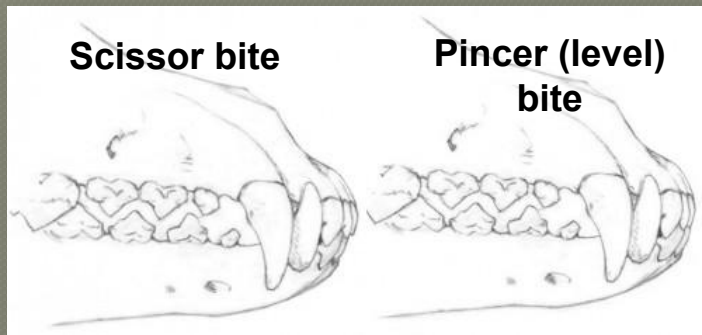
- Bitches: 13" – 17"
- Dogs: 14" – 18"
- No preference within these ranges.
- Disqualification for over or under height limits.



Teeth

Australian Shepherd: Full complement of strong, white teeth, scissor or level bite allowed.

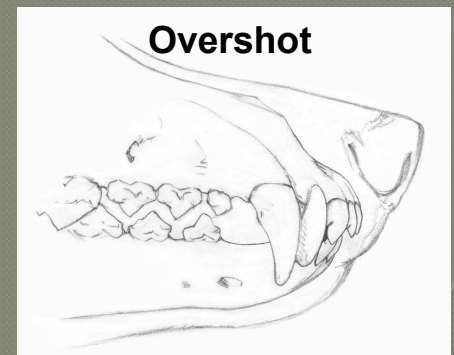
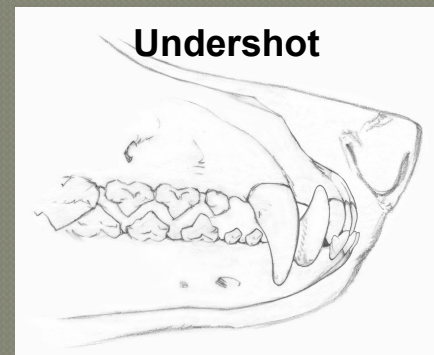
Miniature American Shepherd: A full compliment of teeth meet in a scissors bite.



Teeth broken or missing by accident are not penalized

DISQUALIFICATIONS

- Australian Shepherd: Undershot. Overshot by more than 1/8th inch
- Miniature American Shepherd: Undershot or Overshot



White that is faulted

Australian Shepherd:

- ◉ White on the head should not predominate
- ◉ White collar that exceeds the point of the withers at the skin
- ◉ White extending from the underbelly past 4" above the elbow



Miniature American Shepherd

- ◉ White collar that exceeds the point of the withers at the skin
- ◉ White extending from the underbelly past 1" above the elbow
- ◉ White covering over 25% of an ear is a severe fault



Pink on nose

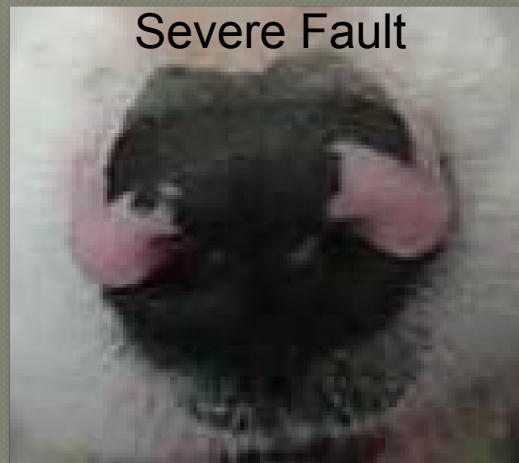
Australian Shepherds

- On the merles it is permissible to have small pink spots; however, they should not exceed 25% of the nose on dogs over one year of age, which is a serious fault.

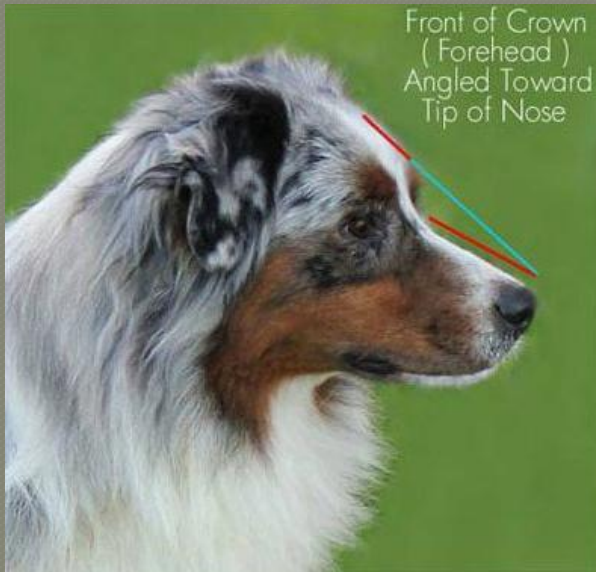


Miniature American Shepherds

- Fully pigmented nose preferred.
- Severe fault is 25—50% un-pigmented nose leather.
- Disqualification is over 50% un-pigmented nose leather.



Head Planes



Miniature American Shepherd

- Viewed from the side, muzzle and top line are slightly oblique to each other
- The front of the crown is on a slight angle downward toward the nose

Australian Shepherd

- Viewed from the side the topline of the back skull and muzzle form parallel planes



In Review - Similarities

- Proportions
- Substance
- Expression
- Eyes
- Ears
- Skull
- Muzzle
- Neck
- Topline
- Tail
- Forequarters
- Hindquarters
- Coat
- Color
- Gait
- Temperament

In Review - Differences

- **Height**
 - Australian Shepherd: Preferred height for Bitches 18-21", Dogs 20-23"
 - MAS: Bitches 13-17", Dogs 14-18". DQ for over or under.
- **Bite**
 - Australian Shepherd: Full dentition, scissors or level bite, DQ for undershot or greater than 1/8" overshot.
 - MAS: Full dentition, scissors bite, DQ or overshot or undershot
- **Faulted White**
 - Australian Shepherd: White that predominates on head, white past point of withers at the skin, or past 4" above the elbow when extending from underbelly.
 - MAS: White past point of withers at skin, or past 1" above the elbow when extending from underbelly. White covering over 25% of an ear is severe fault.
- **Pink on Nose**
 - Australian Shepherd: Pink spot permissible on merles, not to exceed 25% of nose on dogs over one (1) year of age, which is a serious fault.
 - MAS: Fully pigmented preferred. Severe fault – 25-50% unpigmented nose leather. DQ = over 50% unpigmented nose leather
- **Head Planes**
 - Australian Shepherd: Topline of back skull and muzzle form parallel planes.
 - MAS: Muzzle and topline of crown are slightly oblique to each other, with the front of the crown on a slight angle downward toward the nose.

In Review - Disqualifications

Australian Shepherd

1. Undershot bite
2. Overshot bite greater than 1/8"
3. White body splashes

Miniature American Shepherd

1. Height: Under 14" and over 18" for dogs; under 13" and over 17" for bitches. Minimum heights shall not apply to dogs or bitches under six (6) months of age.
2. Over 50% un-pigmented nose leather.
3. Undershot bite
4. Overshot bite
5. Other than recognized colors
6. White body splashes

Gratitude

This Breed Comparison was compiled in partnership between the United States Australian Shepherd Association (USASA) and the Miniature American Shepherd of the U.S.A. (MASCUSA).

We appreciate the time you've taken to learn about the similarities and differences in our wonderful breeds.

If you have any additional questions, we encourage you to reach out to our Parent Club Approved Education providers.

Thank you!

